

Swaziland

for more country data visit <http://aidsinfo.unaids.org>



HIV and AIDS estimates (2013)

Number of people living with HIV
200 000 [200 000-210 000]

Adults aged 15 and up living with HIV
190 000 [180 000-190 000]

Children aged 0 to 14 living with HIV
17 000 [16 000-19 000]

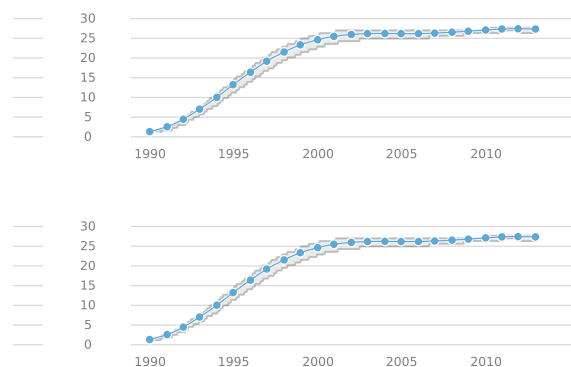
Orphans due to AIDS aged 0 to 17
73 000 [65 000-82 000]

Adults aged 15 to 49 prevalence rate
27.4 [26.6-28.1]

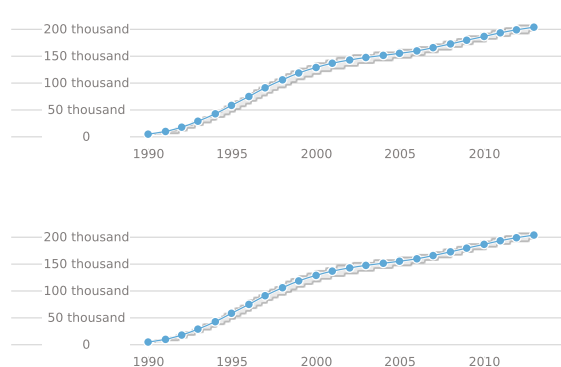
Women aged 15 and up living with HIV
110 000 [110 000-120 000]

Deaths due to AIDS
4 500 [4 200-5 200]

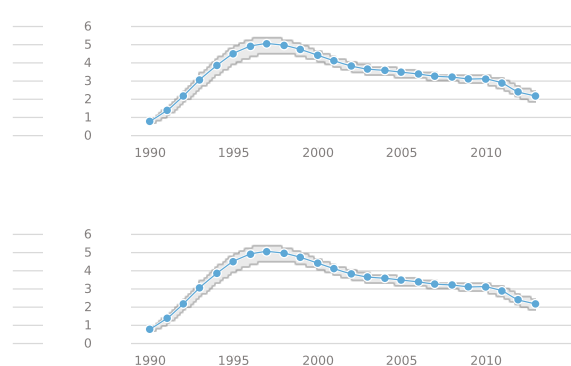
HIV prevalence - ages 15-49 (%)



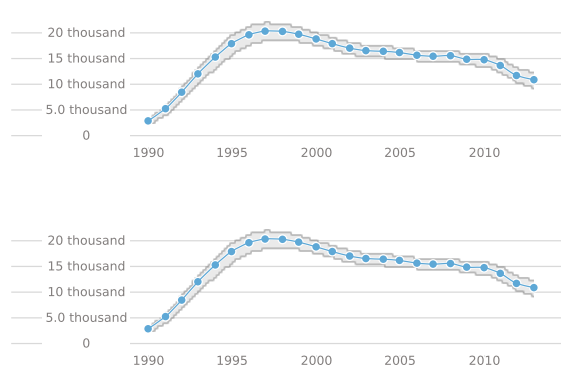
Number of people living with HIV



HIV incidence rate - Ages 15-49 (%)



Number of new infections - all ages



Annual number of AIDS deaths

